



# REACH

COMMUNITY. CITY. WORLD.

## > A Note From Our Lead Pastor

Bible Chapel Family,

It's been humbling, encouraging, and motivating to look back and celebrate all that God has done in 60 years of ministry at The Bible Chapel (TBC). We thank God for those who came before us, who faithfully stewarded their time, talents, and treasures to build God's kingdom in and through the ministries of TBC. And we now have the privilege to look ahead together with eager expectation for all God is calling us to next.

Ephesians 2:10 says: "For we are his workmanship, created in Christ Jesus for good works, which God prepared beforehand, that we should walk in them." We have prayerfully sought the Lord's guidance for the future of our church. We believe the Lord has given us His direction through prayer and many meetings with our congregation, staff, and Elders.

We are so excited to share what we believe God is calling us into with our new stewardship campaign REACH: Community. City. World. The vision for this campaign is to go after ministry needs we believe are most critical as we continue to develop followers of Jesus Christ in the coming years. These needs span our community, our city, and our world with a special emphasis on the next generation as our future leaders. What a privilege it is to serve alongside you - as children of the Living God - to steward all that the Lord has entrusted us with for His glory!

We appreciate your input, prayers, and continued giving toward what God is doing here at The Bible Chapel and for considering how you might be able to give above and beyond over the coming years to this campaign. May God bless you, your families, and the ministry He has called us to together. It's an absolute honor and blessing to be Lead Pastor of The Bible Chapel.

In Christ,

Dave DiDonato





# Table Of Contents

- 2 Our History
- 4 Vision
- 6 Goals
- 8 ...For Our Community
- 10 ...For Our City
- 12 ...For Our World
- 14 My Giving Potential
- 15 Commitment Card



# > History

We stand on the shoulders of believers committed to our mission of developing followers of Jesus Christ for 60 years.

'64

## Circle Drive

The Bible Chapel began as nine couples meeting in a home in Upper St. Clair. They studied the Word, enjoyed fellowship, and called themselves St. Clair Bible Chapel.



'68

## St. Clair Bible Chapel

To make space for the growing congregation, a church building on Circle Drive in Upper St. Clair was purchased.



'91

## Peters High School

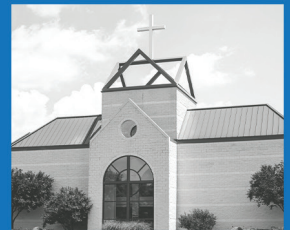
The congregation continued to grow and began meeting in Peters Township High School. When the land on Gallery Drive became available, the congregation rallied together to raise \$600,000 to purchase the property, and God graciously provided the full amount to the penny!



'95

## South Hills Campus

In December 1995, a Christmas dinner celebration was the first event to be held in the newly constructed church building on Gallery Drive, and the entire building was used from the very first Sunday service there.



'05

## Worship Center

Even in the new space, the congregation again found themselves quickly running out of room in the Family Life Center where services were being held. The Worship Center as we know it today was built to hold services and eventually concerts and conferences.



'09

### Robinson Campus

Our Robinson Campus was the first multi-site launched. Its purpose was to provide a strong, Bible-teaching church in the airport area.



'11

### Washington Campus

Our Washington Campus launched with a missional focus and held services at City Mission. When a church building a few doors up from City Mission became available, Washington found its home.



'13

### Wilkinsburg Campus

Our Wilkinsburg Campus originated in Pittsburgh Urban Christian School as a missional campus to the urban areas of Pittsburgh.



'17

### Rostraver Campus

Formerly Pricedale Union Church, our Rostraver Campus was established to minister to our congregants coming to The South Hills Campus from Mon Valley and to reach the people of Mon Valley.



'24

### 60th Anniversary

We praised God for all the life transformation that He accomplished over the last 60 years and the ability to pay off our debt!



## › Vision For This Campaign

Our church's overall vision has long been "to be a place where every seeker finds Jesus, where every believer grows deeper, and where every person experiences true Christian community." For 60 years, we've witnessed countless stories of God's grace and life transformation. And yet, in our own backyard and around the world, churches are swaying from the absolute truth of God's Word, the next generation is being deceived, and the family unit is under attack.

The Bible Chapel and its facilities have long served our multigenerational communities and global partners for 60 years, and - in faith - we believe God is directing us toward opportunities with the greatest potential to reach our community, city, and world.

**We dream of a future in which each TBC campus community is flourishing, the next generation is being developed as the future leaders of our church, believers in Pittsburgh are being equipped beyond Sundays, and our partners in ministry all over the world know that they're not alone.**

This is our aim and focus over the next several years. The time is now for us to reach forward in faith and unity to strongly begin our next 60 years of impact for Jesus Christ in our community, our city, and our world.

**This campaign is not ultimately about buildings or The Bible Chapel, it's about exalting Christ and being aggressive in this generation to see Jesus Transform Lives. Will you join us as we move forward in faith to reach our community, our city, and our world for Jesus Christ in the next 60 years?**



## › Engagement Goal - Everyone

There are opportunities in this campaign to pray, serve, share the vision with others, and give financially to the objectives we believe the Lord has laid before us. As we step into this new stewardship campaign, we are praying that God would draw everyone who calls TBC their church home to be actively involved.

And, as we prepare our hearts to engage in this campaign, let's remind ourselves from God's Word how amazing it is that God chooses to use us, as His Church, to carry out His plan for the world.

God owns all things. "The earth is the Lord's and the fullness thereof, the world and those who dwell therein..." - Psalm 24:1

Everything we have is a gift from God. "Every good gift and every perfect gift is from above, coming down from the Father of lights, with whom there is no variation or shadow due to change." - James 1:17

Everything we have is to be stewarded to honor God.  
"Honor the Lord with your wealth and with the firstfruits of all your produce..." - Proverbs 3:9

God has gifted us all with specific time, talents, and treasures that He has a far greater purpose for than we could ever imagine on our own. Our prayer is that every believer at TBC would prayerfully enter into this campaign, and consider how the Lord wants to stretch us to use our time, talents, and treasures for the advancement of Christ's Church. We pray that all of us, in unity, would be obedient to our Heavenly Father and how He leads us to be engaged in this campaign - not for our glory, but for His glory!



## > Financial Goal - \$4 Million

Following the Lord's leading, we desire to make significant investment at the community level, as well as impactful ministry efforts throughout our city and world.

### COMMUNITY - \$3.2M

We will continue to develop followers of Jesus Christ where God has called and positioned us, in and around each of our campuses. Being a good steward to maintain and upgrade resources He has provided to us in order to better engage the surrounding community and the Next Generation is an essential part of this campaign.

### CITY - \$200K

We will pursue new initiatives to equip our congregation and the greater Pittsburgh area beyond Sunday sermon messages. With more than half of the global population online, we will pursue discipleship efforts in the digital environment and do our part to equip, inspire, unify, bond, encourage, and empower church leaders through various seminar and conference offerings.

### WORLD - \$600K

We will partner with our global workers to support them in new endeavors for the sake of gospel proclamation throughout the world.

## › Vision For Our Community

**It is our desire to invest \$3.2M towards improved ministry spaces across our campuses to better serve each local community we've been called to.**

We are one church in many locations with the same unifying mission to develop followers of Jesus Christ. While we believe God has placed us in these communities and continues to enable us to reach them with the Gospel, we are currently facing unique challenges or opportunities to effectively minister in the context of each community we've been called to serve. We have campuses needing upgrades to address challenges that give a poor first impression or create barriers for engagement with the community - from space for parking, to aging restrooms, to our need for spaces focused on next-gen, and new community initiatives.

### **SOUTH HILLS UPGRADES | \$2.4M**

With the next generation quickly becoming an unreached people group (only 9% of Gen Z claims to be an evangelical Christians\*), we must NOW capture their attention and do whatever we can to give them a sense of belonging at our church. We've outgrown our existing South Hills Next-Gen gathering areas, and temporary relocations to adult-focused areas have communicated to them "we don't have space for you."

A complete re-working of our Room 180/first floor corridor would provide a distinct Next-Gen/Student Wing to the South Hills Campus, outfitted with a worship space, hangout areas, and breakout/small group rooms. Advancing the student identity of this space, the Main Entrance/Door 1 & 2 areas of the South Hills Campus will be re-worked to include a Student Entrance as well as a portico and expanded main entrance into the lobby. Additional improvements will be made to the existing Room 210 for multi-purpose Next Gen use.



\*Source: American National Family Life Survey

*Image does not represent exact specifications of concept*

## **ROBINSON PARKING/INDOOR IMPROVEMENTS & NEW PAVILION | \$250K**

As our fastest-growing campus in 2023, we now must address our parking and ministry gathering space barriers, and invest in several building and surrounding surface area upgrades to maximize the use of the property. This funding would allow us to increase parking, add a pavilion gathering space, and put the finishing touches on our Robinson home to make it more welcoming for the growing number of attendees each week.

## **WASHINGTON RESTROOM UPGRADES | \$250K**

In order to extend the life of our over 155-year-old building, we must renovate our restrooms that currently give a poor first impression to new guests, who research says, typically decide whether or not they're going to return to a church in the first 10 minutes. This funding would provide main restrooms and children's restrooms that are safe, convenient, and suitable to make for a more functional and inviting church home.

## **WILKINSBURG PRISON TRANSITION MINISTRY | \$100K**

We've recognized an opportunity for prison transitional housing in Wilkinsburg and feel we are uniquely equipped for a timely, impactful ministry opportunity. This funding would enable us to establish a comprehensive program providing transitional housing, support services, and church and community engagement to empower individuals in need - directly impacting lives, fostering discipleship, and exemplifying the compassion of Jesus Christ.

## **ROSTRAVER COMMUNITY PAVILION | \$100K**

We've been prayerfully discerning ways to better engage the neighbors and local communities of our Rostraver Campus. With approximately 10K people in the surrounding communities of the Belle Vernon Area, we desire to reach them through new and intriguing outreach efforts to draw them into our community and then introduce them to the life transforming gospel of Jesus Christ. This funding will help diversify our facility with a new pavilion for VBS, outdoor services, concerts/nights of worship, Upward Sports camps, campus picnics, and more. This pavilion will be located next to our campus building in the middle of a residential community with so much outreach potential.

## **CAMPUS INFRASTRUCTURE | \$100K**

Over the past few years, we have continued to empower local campus leadership to shepherd their local communities. With campus empowerment comes additional administrative needs so they can own more of their processes, print needs, etc. This funding will support additional equipment needs at the campuses to allow them to own and function more independently at the administrative level.

## > Vision For Our City

**It is our desire to invest \$200,000 toward new ministry opportunities across key channels: the digital landscape and seminars/conferences.**

We have limited time during weekend services to go deep and wide on key topics in an effort to equip our congregation, yet the church and world needs more equipped believers and leaders. Although we have adult and student programming available throughout the week, we're still lacking in the area of supplemental events and digital content to bring the entire church together around topics like leadership, marriage and singleness, parenting, key cultural issues, etc.

As our church continues to grow, new and expanded digital offerings and seminars/conferences around facing the issues of today with a biblical worldview will be coming at a great time for needed spiritual and leadership development.

### **DIGITAL ENGAGEMENT & DISCIPLESHIP**

With half of the world's population (3.8 billion and growing) active online and turning to Google for answers to life's questions\*, we have a great opportunity to engage with our church family and beyond right where they are through digital channels. We need to embrace this space in a new and relevant way. There are many voices dominating digital ministry; as a strong Bible-teaching church with a strong digital presence and audience already, we must capitalize on this by positioning ourselves for the future of digital ministry which is only going to grow.

Investing in our digital efforts (content, equipment, personnel) will better enable us to connect with and equip our church family throughout the week - whether they're at home or on-the-go. We can go beyond weekend services with deeper dives on sermon topics, equipping for current events and issues of our day, family devotionals, and more - all with the aim to point our congregation and others to Jesus Christ (John 17:17).

*\*Source: Center for Online Evangelism.*

## SEMINARS & CONFERENCES

Seminars and conferences exist outside of our church; however, they can be hit or miss on biblical and quality content offered. And, if long-distance travel is required, barriers like cost, travel time, childcare, etc. can stand in the way. God has blessed us with a building conducive to these types of events, which enables us to invite our congregation, neighbors, and other churches/pastors in our area to engage with expert speakers. He has also blessed us with 60 years of ministry experience in which we can and should leverage to support other churches here and throughout the world.

We'd like to host and/or financially support seminars and conferences here and beyond to equip the saints for the work of ministry. We know, though, that seminars and conferences do more than just equip believers - they also inspire, unify, bond, encourage, and empower them. Through extended worship, teaching, discussion, and challenges to take action, our congregation (and neighbors) will receive spiritual refreshment and re-energization. They will leave with full tanks and kingdom-mindedness around how to navigate leadership, parenting, faith and work, and more, which will transform their personal lives and eventually our community at large.





## > Vision For Our World

**It is our desire to invest \$600,000 toward strengthening and equipping our ministry partners with the required funding needed for the coming years of ministry.**

We have been led by the Lord to establish partnerships with trusted global workers and organizations all over the world to develop followers of Jesus Christ in the context of deep, authentic, Christ-centered relationships; some of which include Word of Life Panama, AIC Zion in the Mathare Slums of Kenya, Lion of Judah Wisdom School in Kenya, Faith House in Thailand, along with many others. Over the last two decades, we have seen the fruit of these global partnerships through countless testimonies of children and families who were previously living in the darkness and desperation of extreme poverty and are now growing in the light and hope of Jesus. It's our desire to continue backing these partnerships so that they thrive and are stronger than ever for the sake of spreading of the gospel.

Right now, due to our global partners' locations in low-income areas of the world, lack of infrastructure and operating funds is an ongoing challenge. Through this campaign, we plan to allocate funds to meet those operating needs in the coming years to better position our global workers in their partnership with us to develop followers of Jesus Christ around the world. It is our desire to invest \$600,000 to strengthen and equip our ministry partners with the required funding needed for the coming years.

**In Kenya, this would prevent more Maasai girls from forced marriages and would allow a Christian education for hundreds of children per year (Kenya is bordered by Muslim countries, e.g. Somalia).**

**In Thailand (an 85% Buddhist country and less than 1% Christian), it would allow for continued support of girls at Faith House, preventing them from being trafficked into the horrific sex industry, and would be the foothold for the presentation of the gospel.**

**In Panama, it would allow for expansion of the presentation of the gospel to thousands of children and young adults on a yearly basis.**

**And throughout the world, it would aid our many global workers in various other ways as they preach the gospel.**

## › My Giving Potential

As we strive together to raise \$4M toward the objectives in this campaign, we trust that God will move through His people, as He always has, to provide what is needed to accomplish the vision He has given us. We encourage you to prayerfully consider how God is calling you forward in generosity, and feel free to use the “my giving potential” chart below as a tool simply to guide you in this process. We know that the prayers, gifts, and works of many can make tremendous things possible!

Gifts Needed	Three-Year Gift Size	Monthly Gift	Annual Gift	Gift Level Total
1	750,000	20,833	250,000	750,000
1	500,000	13,889	166,667	500,000
2	250,000	6,944	83,333	500,000
3	100,000	2,778	33,333	300,000
4	75,000	2,083	25,000	300,000
5	50,000	1,389	16,667	250,000
20	25,000	694	8,333	500,000
25	10,000	278	3,333	250,000
50	5,000	139	1,667	250,000
100	2,500	69	833	250,000
200	1,000	28	333	200,000

**TOTAL GIFT GOAL**

**\$4,000,000**

“Or who has given a gift to him that he might be repaid?”  
 For from him and through him and to him are all things. To him be glory forever. Amen.  
 - Romans 11:35-36



## EVERY GIFT HELPS US REACH OUR GOAL!

Please consider what you might be able to give to the Reach campaign over and above any regular missions or other giving.

### MY/OUR REACH COMMITMENT:

\$ \_\_\_\_\_

WEEKLY MONTHLY YEARLY

ONE-TIME GIFT

#### MY TOTAL 3 YEAR GIVING:

\$ \_\_\_\_\_

I'd like to learn more about including The Bible Chapel in my estate plan or other kinds of giving.

NAME: \_\_\_\_\_

EMAIL: \_\_\_\_\_

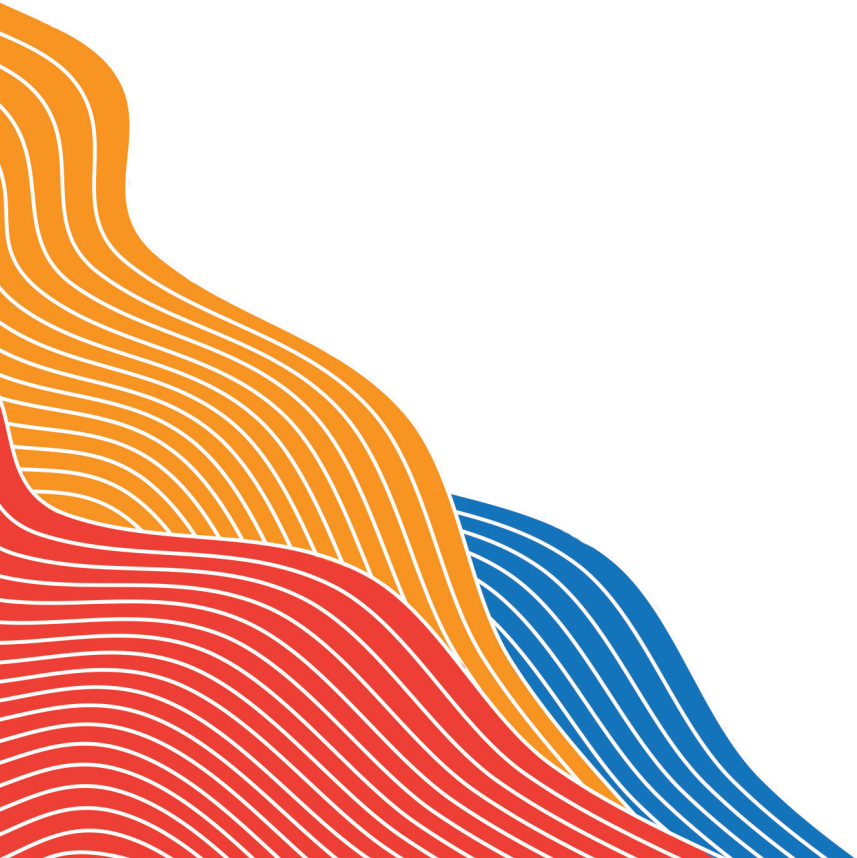
PHONE: \_\_\_\_\_

ADDRESS: \_\_\_\_\_

CAMPUS YOU ATTEND: \_\_\_\_\_







THE  
BIBLE  
CHAPEL

BIBLECHAPEL.ORG/REACH